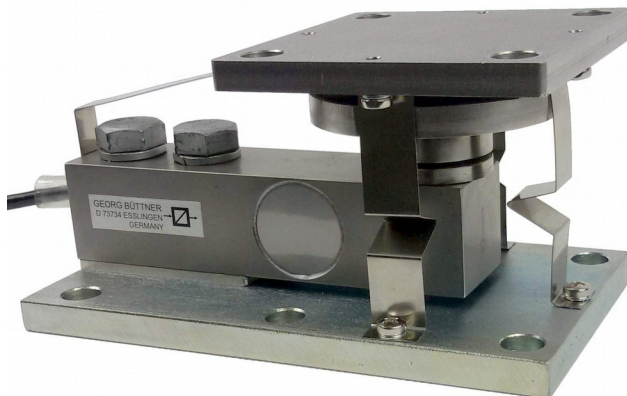




SPRINGMOUNT® Weighing Module

GX-M25G

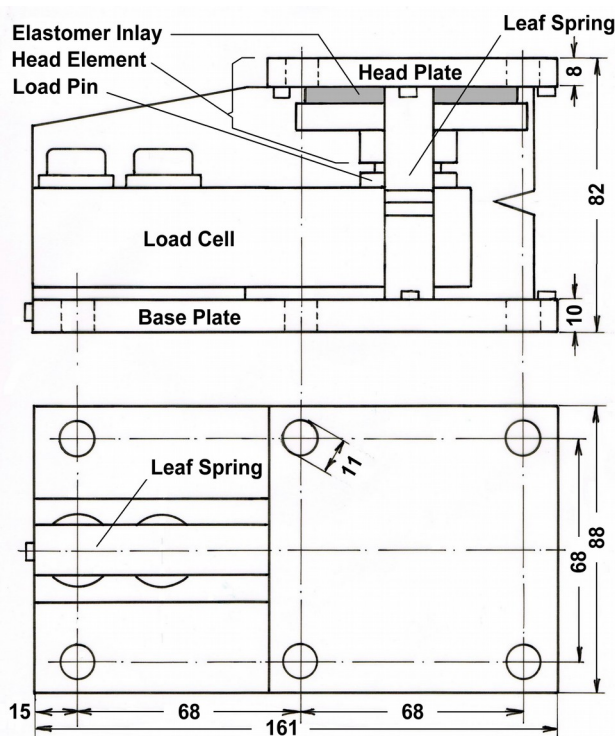
Capacities: 500, 1000, 2000 kg.



Characteristics:

- Elastic Restraining using Leaf Springs (*SPRINGMOUNT®*-Technology)
- Optimised Force Transmission from Head Plate (with Elastomer Inlay) to Load Cell
- Load Cell made of Stainless Steel (17-4PH)
- Sensitivity 2 mV/V (GX25), 3 mV/V (B8D)
- Accuracy Class 0.02% (GX25), C3 (B8D)
- Environmental Protection IP 67

Dimensions:



Dimensions in mm.

Cable Diameter max. 5 mm, Cable Length 6 m (4-wire).



SPRINGMOUNT® Weighing Module

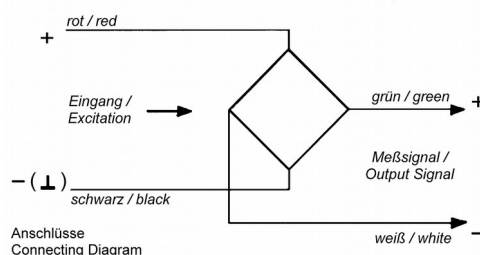
GX-M25G

Technical Specifications:

			with GX25	with B8D
Capacity	(E_{\max})	[kg]	500, 1000, 2000.	
Accuracy Class			0.02%	C3 (OIML R60)
Maximum Number of Load Cell Intervals	(n_{LC})		3000	3000
Minimum Load Cell Verification Interval	(V_{\min})	[% of E_{\max}]	0.01	0.007
Sensitivity	(C_n)	[mV/V]	2.00 ± 0.02	3.00 ± 0.01
Non-Linearity	(d_{lin})		≤ 0.02	≤ 0.018
Zero Balance		[% of C_n]	≤ 1	
Temperature Effect on Zero Balance	(TC_0)	[%C/10K]	≤ 0.02	≤ 0.018
Temperature Effect on Sensitivity	(TC_C)	[%C/10K]	≤ 0.02	≤ 0.014
Minimum Dead Load		[% of E_{\max}]	0	
Safe Load Limit	(E_{lim})	[% of E_{\max}]	120	150
Breaking Load	(E_d)	[% of E_{\max}]	250	300
Deflection at E_{\max}		[mm]	≤ 0.90	
Creep (over 30 Minutes)		[% of C_n]	≤ 0.02	
Zero Return after 30 Minutes		[% of C_n]	≤ 0.02	
Excitation		[V]	5 ... 15	5 ... 12
Input Resistance	(R_{LC})	[Ω]	385 ± 15	350 ± 3.5
Output Resistance	(R_{OUT})	[Ω]	350 ± 5	350 ± 3.5
Insulation Resistance		[M Ω]	> 4000 (at 50V DC)	
Nominal Temperature Range		[°C]	-10 ... +40	
Service Temperature Range		[°C]	-20 ... +60	-35 ... +65
Storage Temperature Range		[°C]	-40 ... +75	
Material of Load Cell			Stainless Steel (17-4PH)	
Material of Other Parts			either Stainless Steel or Galvanised Steel	
Protection Class to EN 60 529			IP65	

Cable/Connections:

- 4-wire cable, 6 m long;
- Screened cable, screen not connected to load cell body;
- Cable diameter approx. 5 mm;
- End of wires stripped and tinned.



Excitation +	red
Excitation -	black
Signal +	green
Signal -	white

Optional Accessories:



Load Cell Junction Box, Model AK,
Stainless Steel Housing IP65



Load Cell Connection Cable,
4-wire or 6-wire, screened

More Weighing Technology (e. g. load cells, weight indicators, weighing amplifiers) on www.gbuettner.de.