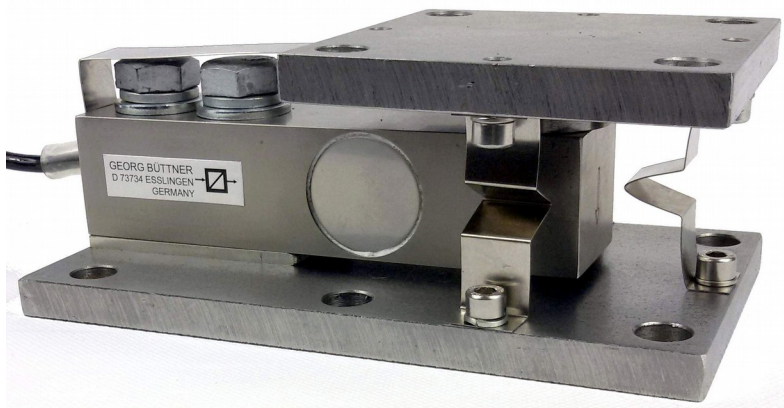




## SPRINGMOUNT® Weighing Module

# GX-M25D

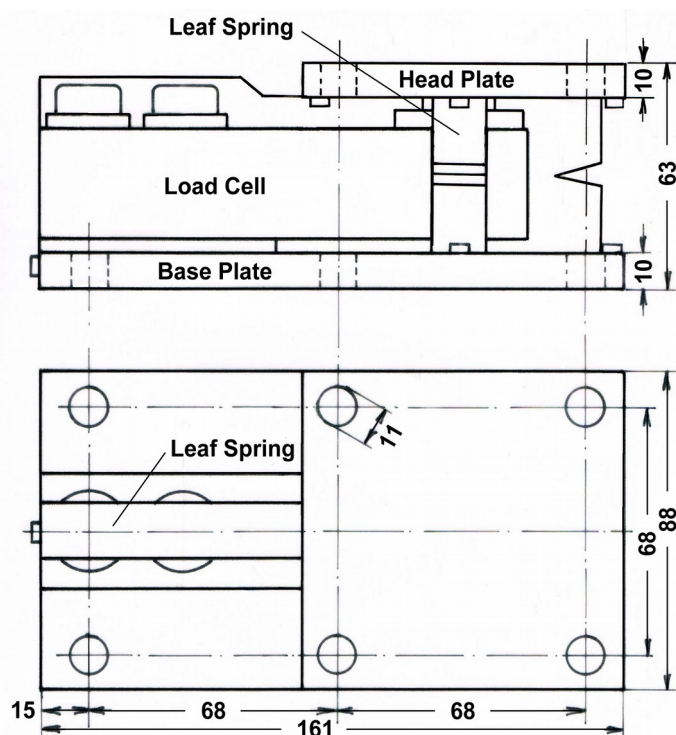
Capacities: 500, 1000, 2000 kg.



### Characteristics:

- Elastic Restraining using Leaf Springs (*SPRINGMOUNT®*-Technology)
- Optimised Force Transmission from Head Plate to Load Cell
- Load Cell made of Stainless Steel (17-4PH)
- Sensitivity 2 mV/V (GX25), 3 mV/V (B8D)
- Accuracy Class 0.02% (GX25), C3 (B8D)
- Environmental Protection IP 67

### Dimensions:



Dimensions in mm.

Cable Diameter max. 5 mm, Cable Length 6 m (4-wire).



## SPRINGMOUNT® Weighing Module

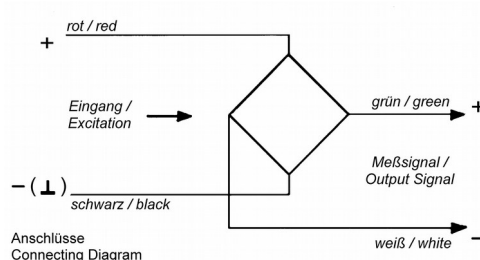
## GX-M25D

### Technical Specifications:

			with GX25	with B8D
Capacity	( $E_{\max}$ )	[kg]	500, 1000, 2000.	
Accuracy Class			0.02%	C3 (OIML R60)
Maximum Number of Load Cell Intervals	( $n_{LC}$ )		3000	3000
Minimum Load Cell Verification Interval	( $V_{\min}$ )	[% of $E_{\max}$ ]	0.01	0.007
Sensitivity	( $C_n$ )	[mV/V]	$2.00 \pm 0.02$	$3.00 \pm 0.01$
Non-Linearity	( $d_{lin}$ )		$\leq 0.02$	$\leq 0.018$
Zero Balance		[% of $C_n$ ]	$\leq 1$	
Temperature Effect on Zero Balance	( $TC_0$ )	[%C/10K]	$\leq 0.02$	$\leq 0.018$
Temperature Effect on Sensitivity	( $TC_C$ )	[%C/10K]	$\leq 0.02$	$\leq 0.014$
Minimum Dead Load		[% of $E_{\max}$ ]	0	
Safe Load Limit	( $E_{lim}$ )	[% of $E_{\max}$ ]	120	150
Breaking Load	( $E_d$ )	[% of $E_{\max}$ ]	250	300
Deflection at $E_{\max}$		[mm]	$\leq 0.90$	
Creep (over 30 Minutes)		[% of $C_n$ ]	$\leq 0.02$	
Zero Return after 30 Minutes		[% of $C_n$ ]	$\leq 0.02$	
Excitation		[V]	5 ... 15	5 ... 12
Input Resistance	( $R_{LC}$ )	[ $\Omega$ ]	$385 \pm 15$	$350 \pm 3.5$
Output Resistance	( $R_{OUT}$ )	[ $\Omega$ ]	$350 \pm 5$	$350 \pm 3.5$
Insulation Resistance		[M $\Omega$ ]	> 4000 (at 50V DC)	
Nominal Temperature Range		[°C]	-10 ... +40	
Service Temperature Range		[°C]	-20 ... +60	-35 ... +65
Storage Temperature Range		[°C]	-40 ... +75	
Material of Load Cell			Stainless Steel (17-4PH)	
Material of Other Parts			either Stainless Steel or Galvanised Steel	
Protection Class to EN 60 529			IP67	

### Cable/Connections:

- 4-wire cable, 6 m long;
- Screened cable, screen not connected to load cell body;
- Cable diameter approx. 5 mm;
- End of wires stripped and tinned.



Excitation +	red
Excitation -	black
Signal +	green
Signal -	white

### Optional Accessories:



Load Cell Junction Box, Model AK,  
Stainless Steel Housing IP65



Load Cell Connection Cable,  
4-wire or 6-wire, screened

More Weighing Technology (e. g. load cells, weight indicators, weighing amplifiers) on [www.gbuettner.de](http://www.gbuettner.de).