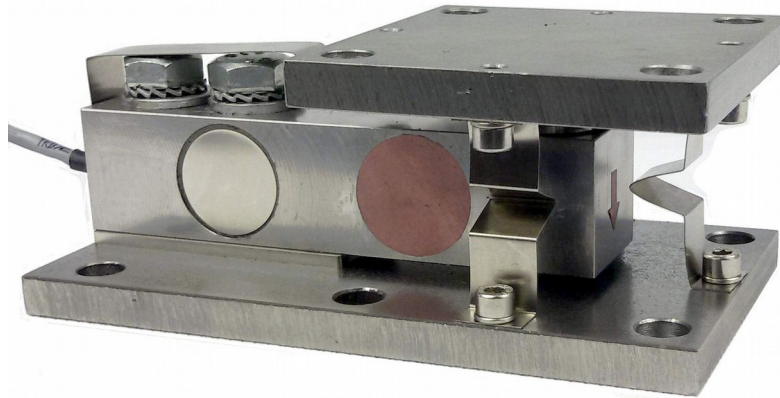




**SPRINGMOUNT® Weighing Module**

**BS-M25D**

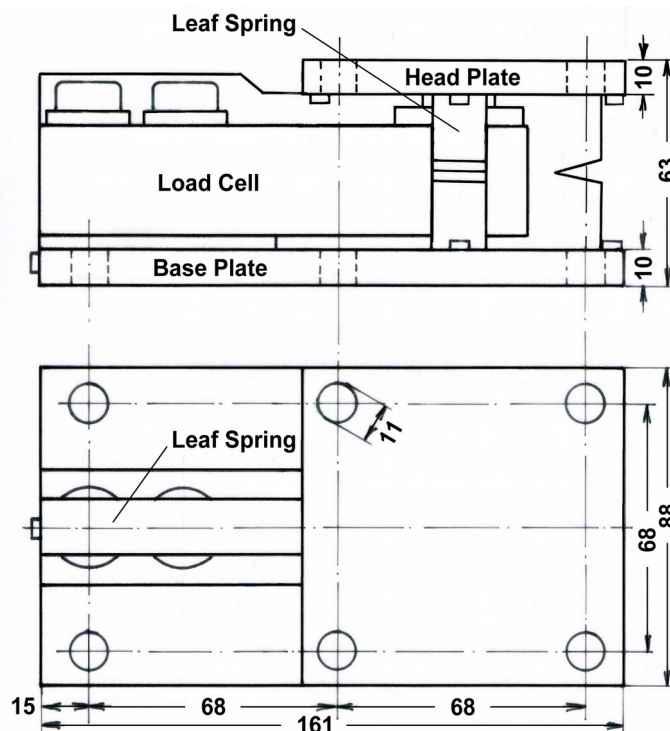
Capacity: 1500 kg.



**Characteristics:**

- Elastic restraining using leaf springs (*SPRINGMOUNT®*-Technology)
- Optimised force transmission from head plate to load cell
- Load cell made of stainless steel (17-4PH)
- Sensitivity 2 mV/V
- Accuracy class 0.02%
- Environmental protection IP 65

**Dimensions:**



Dimensions in mm.

Cable Diameter max. 5 mm, Cable Length 5 m (4-wire).



**SPRINGMOUNT® Weighing Module**

**BS-M25D**

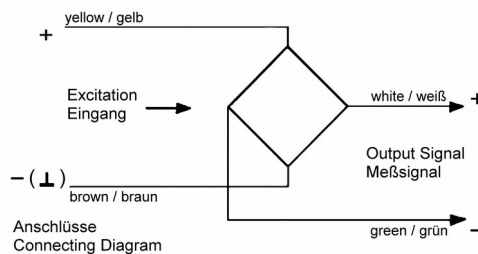
*Technical Specifications:*

Used Load Cell: BS25

|   |               |                   |                                     |
|---|---------------|-------------------|-------------------------------------|
| Capacity                                | ( $E_{max}$ ) | [kg]              | 1500                                |
| Accuracy Class                          |               |                   | 0.02%                               |
| Maximum Number of Load Cell Intervals   | ( $n_{LC}$ )  |                   | 3000                                |
| Minimum Load Cell Verification Interval | ( $V_{min}$ ) | [% of $E_{max}$ ] | 0.01                                |
| Sensitivity                             | ( $C_n$ )     | [mV/V]            | 2.00 ± 0.02                         |
| Non-Linearity                           | ( $d_{lin}$ ) |                   | ≤ 0.02                              |
| Zero Balance                            |               | [% of $C_n$ ]     | ≤ 1                                 |
| Temperature Effect on Zero Balance      | ( $TC_0$ )    | [%C/10K]          | ≤ 0.02                              |
| Temperature Effect on Sensitivity       | ( $TC_C$ )    | [%C/10K]          | ≤ 0.02                              |
| Minimum Dead Load                       |               | [% of $E_{max}$ ] | 0                                   |
| Safe Load Limit                         | ( $E_{lim}$ ) | [% of $E_{max}$ ] | 150                                 |
| Breaking Load                           | ( $E_d$ )     | [% of $E_{max}$ ] | 300                                 |
| Deflection at $E_{max}$                 |               | [mm]              | ≤ 0.90                              |
| Creep (over 30 Minutes)                 |               | [% of $C_n$ ]     | ≤ 0.02                              |
| Zero Return after 30 Minutes            |               | [% of $C_n$ ]     | ≤ 0.02                              |
| Excitation                              |               | [V]               | 5 ... 15                            |
| Input Resistance                        | ( $R_{LC}$ )  | [Ω]               | 410 ± 30                            |
| Output Resistance                       | ( $R_{OUT}$ ) | [Ω]               | 350 ± 5                             |
| Insulation Resistance                   |               | [MΩ]              | > 3000 (at 100V DC)                 |
| Nominal Temperature Range               |               | [°C]              | -10 ... +40                         |
| Service Temperature Range               |               | [°C]              | -20 ... +65                         |
| Storage Temperature Range               |               | [°C]              | -40 ... +75                         |
| Material of Load Cell                   |               |                   | Stainless Steel (17-4PH)            |
| Material of Other Parts                 |               | either            | Stainless Steel or Galvanised Steel |
| Protection Class to EN 60 529           |               |                   | IP65                                |

*Cable/Connections:*

- 4-wire cable, 5 m long;
- Cable screened, screen not connected to load cell body;
- Cable diameter approx. 5 mm;
- End of wires stripped and tinned.



|              |        |
|--------------|--------|
| Excitation + | yellow |
| Excitation - | brown  |
| Signal +     | white  |
| Signal -     | green  |

*Optional Accessories:*



Load Cell Junction Box, Model AK,  
Stainless Steel Housing IP65



Load Cell Connection Cable,  
4-wire or 6-wire, screened

More Weighing Technology (e. g. load cells, weight indicators, weighing amplifiers) on [www.gbuettner.de](http://www.gbuettner.de).