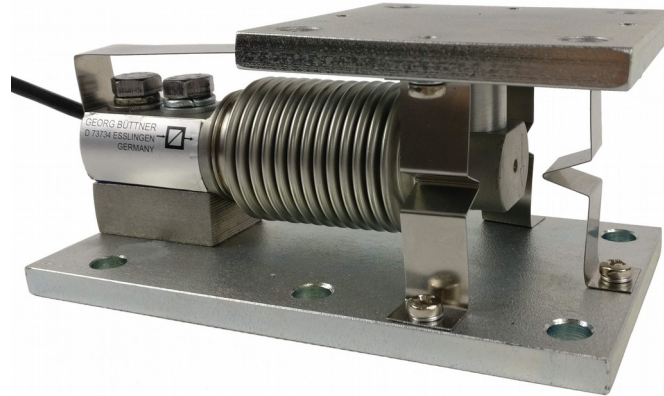


## SPRINGMOUNT® Weighing Module

# BC-M84D

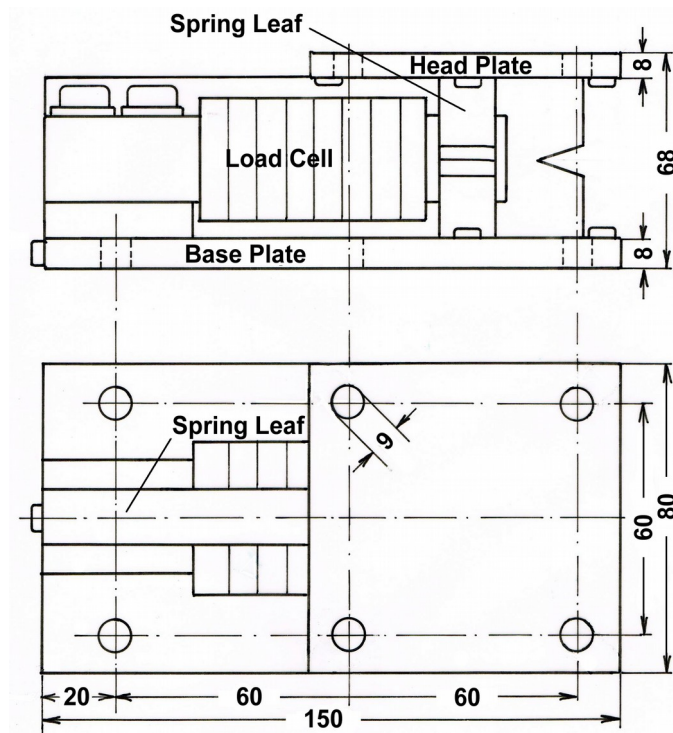
Capacities: 50, 100, 200, 250, 350, 500 kg.



### Characteristics:

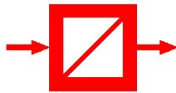
- Elastic Restraining using Leaf Springs (*SPRINGMOUNT®*-Technology)
- Optimised Force Transmission from Head Plate to Load Cell
- Load Cell made of Stainless Steel (17-4PH)
- Sensitivity 2 mV/V
- Accuracy Class C3 (OIML R60)
- Environmental Protection IP 68

### Dimensions:



Dimensions in mm.

Cable Diameter max. 5 mm, Cable Length 3 m (4-wire).



**SPRINGMOUNT® Weighing Module**

**BC-M84D**

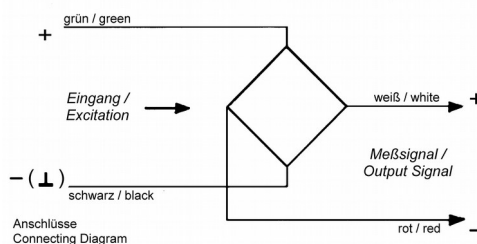
*Technical Specifications:*

Used Load Cell: B84-C3 (BM11)

Capacity	( $E_{max}$ )	[kg]	50, 100, 200, 250, 350, 500.
Accuracy Class			C3 (OIML R60)
Maximum Number of Load Cell Intervals	( $n_{LC}$ )		3000
Minimum Load Cell Verification Interval	( $V_{min}$ )	[% of $E_{max}$ ]	0.007
Sensitivity	( $C_n$ )	[mV/V]	2.00 ± 0.02
Non-Linearity	( $d_{lin}$ )		≤ 0.018
Zero Balance		[% of $C_n$ ]	≤ 1
Temperature Effect on Zero Balance	( $TC_0$ )	[%C/10K]	≤ 0.02
Temperature Effect on Sensitivity	( $TC_C$ )	[%C/10K]	≤ 0.02
Minimum Dead Load		[% of $E_{max}$ ]	0
Safe Load Limit	( $E_{lim}$ )	[% of $E_{max}$ ]	150
Breaking Load	( $E_d$ )	[% of $E_{max}$ ]	300
Deflection at $E_{max}$		[mm]	≤ 0.60
Creep (over 30 Minutes)		[% of $C_n$ ]	≤ 0.02
Zero Return after 30 Minutes		[% of $C_n$ ]	≤ 0.02
Excitation		[V]	5 ... 12
Input Resistance	( $R_{LC}$ )	[Ω]	460 ± 50
Output Resistance	( $R_{OUT}$ )	[Ω]	350 ± 3,5
Insulation Resistance		[MΩ]	> 5000 (at 50V DC)
Nominal Temperature Range		[°C]	-10 ... +40
Service Temperature Range		[°C]	-35 ... +65
Storage Temperature Range		[°C]	-40 ... +70
Material of Load Cell			Stainless Steel (17-4PH)
Material of Other Parts			either Stainless Steel or Galvanised Steel
Protection Class to EN 60 529			IP68

*Cable/Connections:*

- 4-wire cable, 3 m long;
- Screened cable, screen not connected to load cell body;
- Cable diameter approx. 5 mm;
- End of wires stripped and tinned.



Excitation +	green
Excitation -	black
Signal +	white
Signal -	red

*Optional Accessories:*



Load Cell Junction Box, Model AK,  
Stainless Steel Housing IP65



Load Cell Connection Cable,  
4-wire or 6-wire, screened

More Weighing Technology (e. g. load cells, weight indicators, weighing amplifiers) on [www.gbuettner.de](http://www.gbuettner.de).