

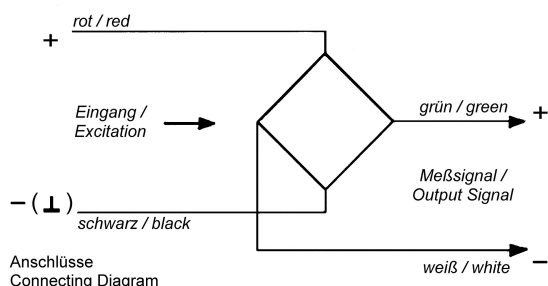


615-e

## Weighing Module, Type B-DJ-M2

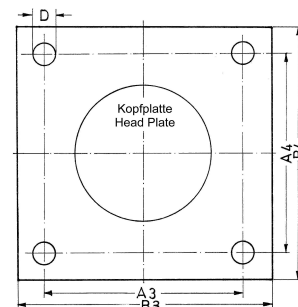
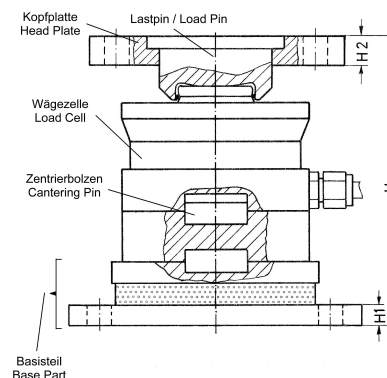
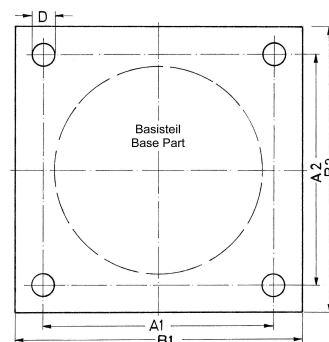
Load Cell with Mounting Parts

- For measuring force and weight (compression)
- Simple mounting,  
with mounting flanges  
(Head Plate & Base Part)
- Base Part with integrated elastomer  
for a smoother transmission of force
- **Ideal (mounting very advantageous)  
for silos, weigh bins, mixers and machines**
- Compact design,  
Load Cell and Load Button made of stainless  
steel, other parts made of either stainless steel  
or galvanised steel
- High Protection (IP68), for rough environments
- Different capacities available
- Suitable for all common weighing electronics



### Technical Specifications of the Load Cell:

Nominal Output at Capacity	$2.85 \pm 0.01 \text{ mV/V}$
Non Linearity	$< 0.03\%$
Creep (30min)	$< 0.03\%$
Zero Output Tolerance	$< 1\%$
Input Resistance	approx. $1450\Omega$
Output Resistance	$1402\Omega \pm 3\Omega$
Insulation Resistance (50V)	$5000\text{M}\Omega$
Environmental Protection	IP68
Temperature Effect per $10^\circ\text{C}$ on:	
- Nominal Output	$< 0.03\%$
- Zero Output	$< 0.03\%$
Compensated Temp. Range	$-10$ to $+40^\circ\text{C}$
Operating Temp. Range	$-30$ to $+70^\circ\text{C}$
Excitation	max. $15\text{V}$
Safe Overload	$150\%$
Mechanical Failure	$200\%$



B-DJ-M2 Capacity [t]	H	H1	A1 = A2	B1 = B2	H2	A3 = A4	B3 = B4	D	Cable [m]
1 / 2.2 / 3.3 / 4.7	107	8	70	90	8	70	90	9	8
10 / 15 / 22	123	10	92	115	10	75	100	11	12
33	152	12	102	130	12	90	120	13	12