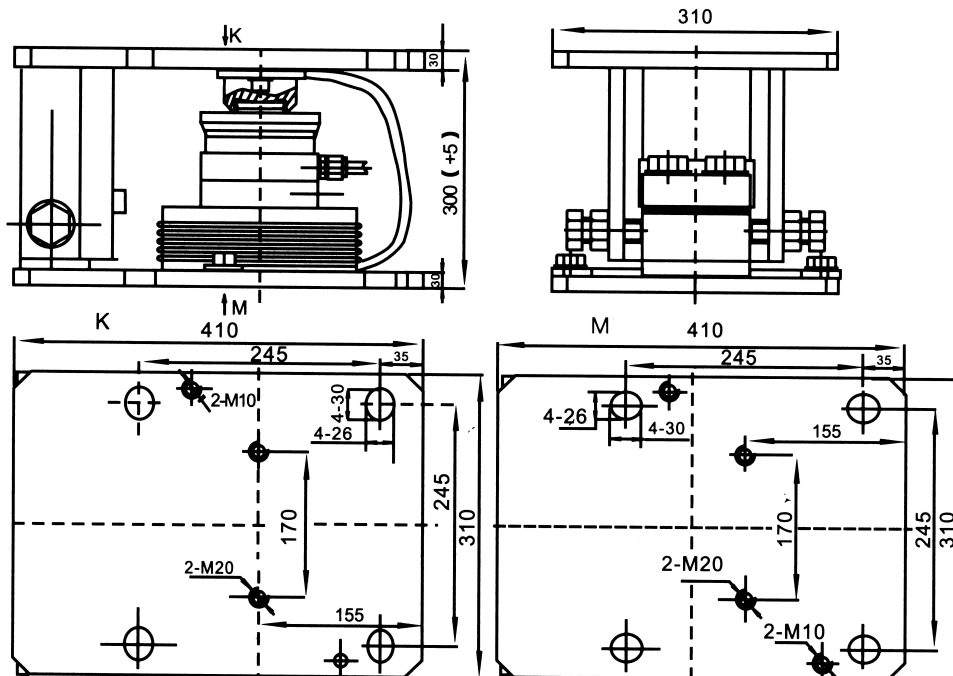
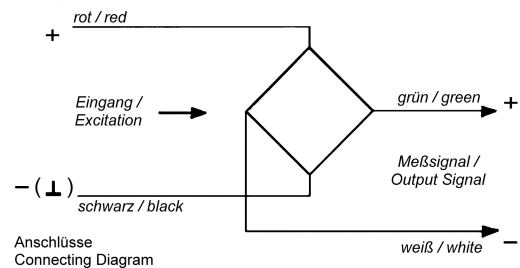


609-e

Weighing Module, Type B-DJ-C-100T

(Mounting Set)

- For measuring force and weight (compression)
(High Capacity Range 100 t)
- With mounting flanges (steel),
as well as simple lift-up protection,
easy mounting
- **Ideal (mounting very advantageous)
for silos and weigh bins**
- Compact design, load cell made of stainless
steel, with elastomer element
- High protection (IP68), for rough environments
- Suitable for all common weighing electronics



Technical Specifications:

Nominal Output at Capacity	2.85 ± 0.01mV/V
Non Linearity	< 0.03%
Zero Output Tolerance	< 1%
Input Resistance	approx. 1450Ω
Output Resistance	1402Ω ± 3Ω
Insulation Resistance (50V)	5GΩ

Cable Length	16m
Operating Temp. Range	-30 to +70°C
Excitation	max. 15V
Safe Overload	150%
Mechanical Failure	200%
Protection Mode	IP68