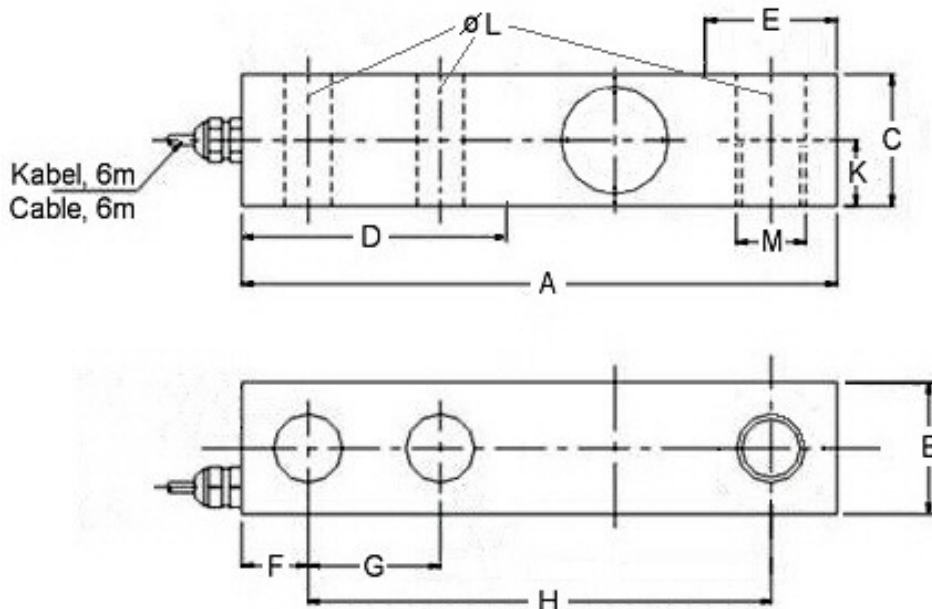
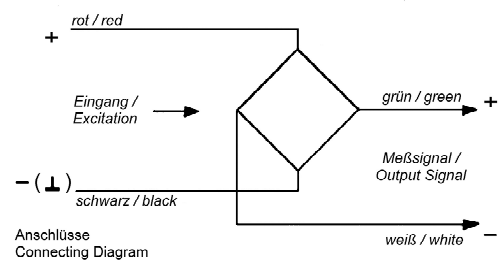
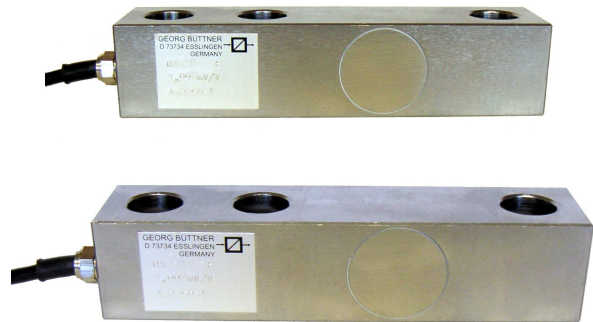


593-e

Load Cells, Model Series GX 25, GX 38, GX 50

Weighing Sensors

- For exact measurements of force and weight (tension and compression)
- Measuring Body made of Stainless Steel, with 4-wires Connecting Cable
- Temperature Range -10 to +50°C
- Non-Linearity $\pm 0.02\%$
- Zero Output Tolerance $\pm 2\%$
- Nominal Output at Capacity 2 mV/V $\pm 1\%$
- Excitation max. 15V
- Input Resistance $385\Omega \pm 15\Omega$
- Output Resistance $350\Omega \pm 5\Omega$
- Insulation Resistance $> 4G\Omega$
- Safe Overload 120%
- Mechanical Failure 250%
- Environmental Protection IP67
- Simple Mounting



Type	Capacity [kg]	A [mm]	B [mm]	C [mm]	D* [mm]	E* [mm]	F [mm]	G [mm]	H [mm]	K [mm]	L [mm]	M
GX 25	500, 1000, 2000	130	32	32	57	28.4	15.7	25.4	101.6	16	Ø13.5	M12x1.75
GX 38	2500, 3000, 5000	171.5	38	38	76	40.2	19.1	38.1	133.4	18	Ø20.0	M18x1.5
GX 50	7500, 10000	222.5	50.8	50.8	102	50.6	25.4	50.8	174.6	25.4	Ø27.0	M24x2

*D, E = Limits of support area (for spacers, etc.)