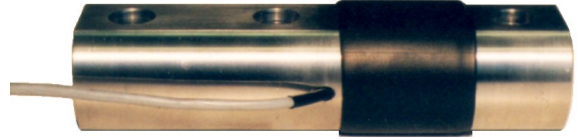


517-e

Load Cells, Model Series B 82, BS 82

(Weighing Sensors)

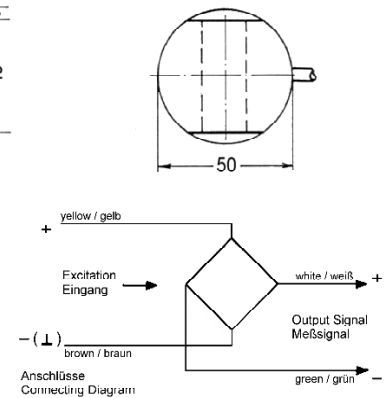
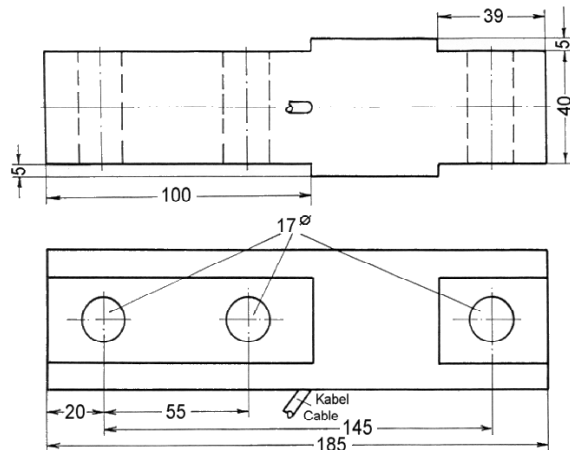
- For exact measurements of force and weight (tension and compression)
- Measuring Body made of Stainless Steel, with screened 4-wires Connecting Cable, 5m long
- Temperature Range -10 to +65°C
- Non-Linearity $\pm 0.02\%$
- Zero Output Tolerance $\pm 1\%$
- Nominal Output at Capacity 2 mV/V $\pm 1\%$
- Excitation max. 12V
- Input Resistance approx. 380 Ω
- Output Resistance approx. 350 Ω
- Insulation Resistance > 4G Ω
- Safe Overload 150%
- Mechanical Failure 300%
- Environmental Protection IP65
- Simple Mounting



Capacities:

B82: 500, 700 kg, 1, 1.5, 2, 2.5, 3, 5 t.
BS82: 1, 1.5, 2, 2.5, 3, 5 t.

Drawing:
**Load Cell,
Type B 82**



Drawing:
**Load Cell,
Type BS 82**

