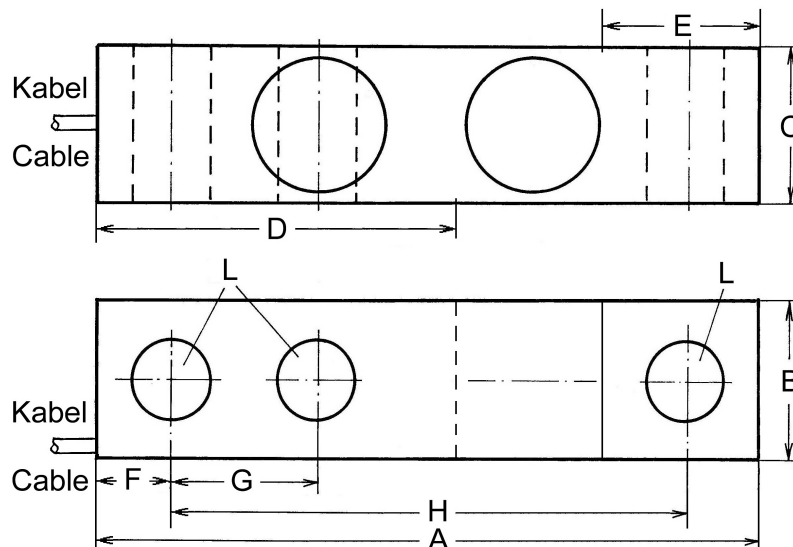
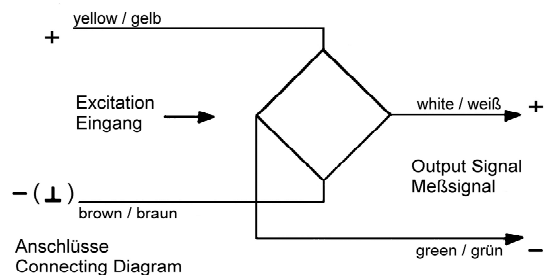
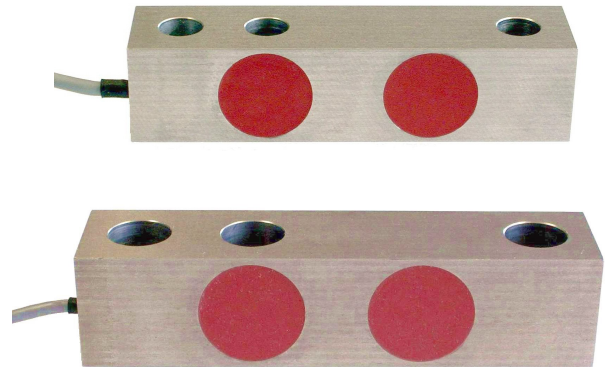


595-e

## Load Cells, Model Series BS 25, BS 38

(Weighing Sensors)

- For exact measurements of force and weight (tension and compression)
- Measuring Body made of Stainless Steel, with screened 4-wires Connecting Cable
- Temperature Range -10 to +65°C
- Non-Linearity  $\pm 0.02\%$
- Zero Output Tolerance  $\pm 1\%$
- Nominal Output at Capacity 2 mV/V  $\pm 1\%$
- Excitation max. 12V
- Input Resistance approx. 410 $\Omega$
- Output Resistance approx. 350 $\Omega$
- Insulation Resistance > 4G $\Omega$
- Safe Overload 150%
- Mechanical Failure 300%
- Environmental Protection IP65
- Simple Mounting



Type	Capacity [kg]	A [mm]	B [mm]	C [mm]	D [mm]	E [mm]	F [mm]	G [mm]	H [mm]	L [mm]	Cable [m]
BS 25	500, 700, 1000, 1500, 2000	132	31	31	70.4	28.4	15	25.4	101.6	∅13	5
BS 38	2500, 3000, 5000, 7000	172	40	40	92.2	40.2	19.1	38.1	133.4	∅21	5