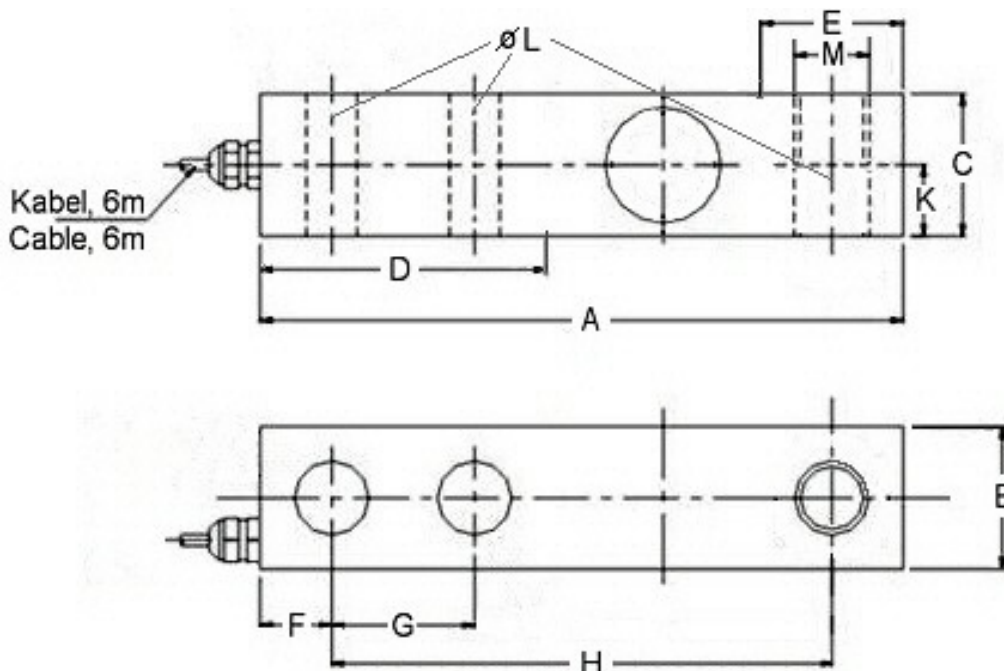
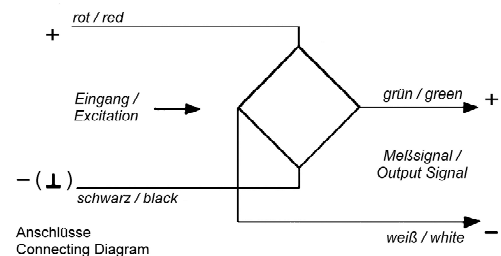
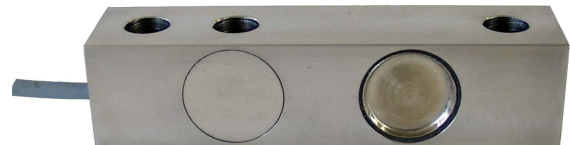


592-e

Load Cell, Type B8D-C3 Weighing Sensor

- OIML R60, Accuracy Class C3
- For exact measurements of force and weight (tension and compression)
- Measuring Body made of Stainless Steel, with screened 4-wires Connecting Cable
- Temperature Range -10 to +40°C
- Non-Linearity $\leq 0.02\%$
- Zero Output Tolerance $\pm 1\%$
- Nominal Output at Capacity 3 mV/V $\pm 0.3\%$
- Excitation max. 18V
- Input Resistance $350\Omega \pm 4\Omega$
- Output Resistance $350\Omega \pm 4\Omega$
- Insulation Resistance $> 5G\Omega$
- Safe Overload 150%
- Mechanical Failure 300%
- Environmental Protection IP67
- Simple Mounting



Capacity [kg]	A [mm]	B [mm]	C [mm]	D* [mm]	E* [mm]	F [mm]	G [mm]	H [mm]	K [mm]	L [mm]	M
500, 1000, 2000	130.1	31.2	31.2	57	28.4	15.8	25.4	101.6	15.8	∅13.5	M12
5000	171.5	36.8	36.8	76	40.2	19.1	38.1	133.3	19.1	∅20.7	M20

*D, E = Limits of support area (for spacers, etc.)