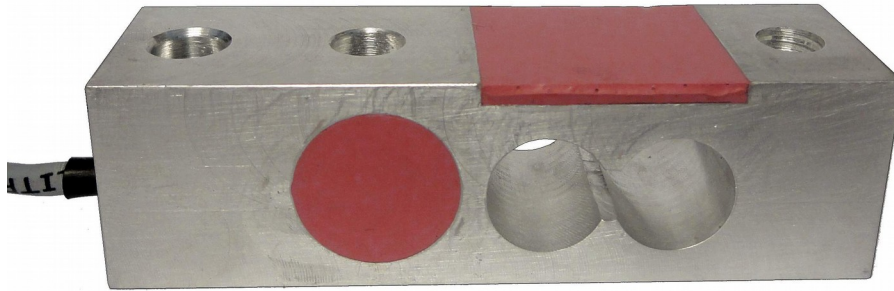


## Load Cell

# B7C

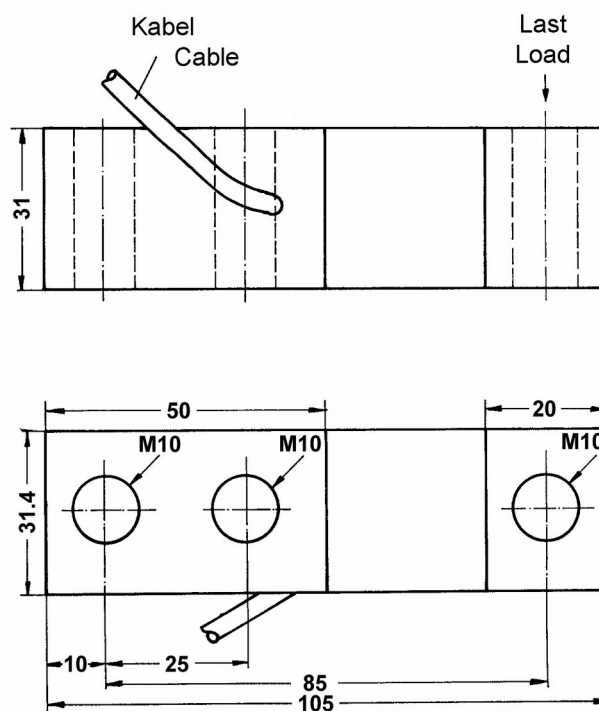
Capacities: 100,150, 250, 300 kg.



### Characteristics:

- For tension and compression
- Parallel connection with other load cells possible
- Simple mounting
- Mounting accessories available as option
- Load cell made of aluminium
- Sensitivity 2.00 mV/V
- Accuracy class 0.02%
- Environmental protection IP 65

### Dimensions:



Dimensions in mm.

Cable Diameter max. 5 mm, Cable Length 3 m, 4-wire.



## Load Cell

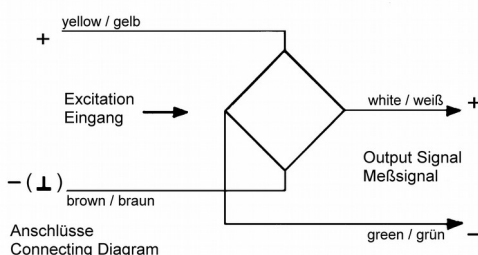
# B7C

### Technical Specifications:

Capacity	( $E_{\max}$ )	[kg]	100, 150, 250, 300.
Accuracy Class			0.02%
Maximum Number of Load Cell Intervals	( $n_{LC}$ )		3000
Minimum Load Cell Verification Interval	( $V_{\min}$ )	[% of $E_{\max}$ ]	0.01
Sensitivity	( $C_n$ )	[mV/V]	$2.00 \pm 0.20$
Non-Linearity	( $d_{lin}$ )	[% of $C_n$ ]	$\leq 0.02$
Zero Balance		[% of $C_n$ ]	$\leq 1$
Temperature Effect on Zero Balance	( $TC_0$ )	[%C/10K]	$\leq 0.02$
Temperature Effect on Sensitivity	( $TC_C$ )	[%C/10K]	$\leq 0.02$
Minimum Dead Load		[% of $E_{\max}$ ]	0
Safe Load Limit	( $E_{lim}$ )	[% of $E_{\max}$ ]	150
Breaking Load	( $E_d$ )	[% of $E_{\max}$ ]	300
Deflection at $E_{\max}$		[mm]	$\leq 0.30$
Creep (over 30 Minutes)		[% of $C_n$ ]	$\leq 0.02$
Zero Return after 30 Minutes		[% of $C_n$ ]	$\leq 0.02$
Excitation		[V]	5 ... 15
Input Resistance	( $R_{LC}$ )	[ $\Omega$ ]	$385 \pm 50$
Output Resistance	( $R_{OUT}$ )	[ $\Omega$ ]	$350 \pm 3.5$
Insulation Resistance		[M $\Omega$ ]	> 5000 (at 50V DC)
Nominal Temperature Range		[°C]	-10 ... +40
Service Temperature Range		[°C]	-20 ... +60
Storage Temperature Range		[°C]	-40 ... +70
Material of Load Cell			Aluminium
Certification according to ATEX (Ex)			none
Protection Class to EN 60 529			IP65

### Cable/Connections:

- 4-wire cable, 5 m long;
- Cable screened,  
screen not connected  
to load cell body;
- Cable diameter approx. 5 mm;
- Wires' ends stripped and tinned.



Eingang +	gelb
Eingang -	braun
Ausgang +	weiss
Ausgang -	grün

### Optional Accessories:



Load cell junction box, model AK,  
IP65 stainless steel housing



Load cell connection cable,  
4-wire or 6-wire, screened

Further weighing technology (e. g. weighing controllers) on [www.gbuettner.de](http://www.gbuettner.de).