

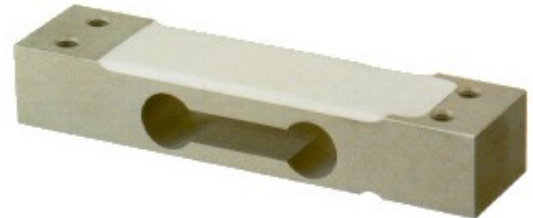
547-e

## Load Cell, Type BSP 10

(Weighing Sensor)

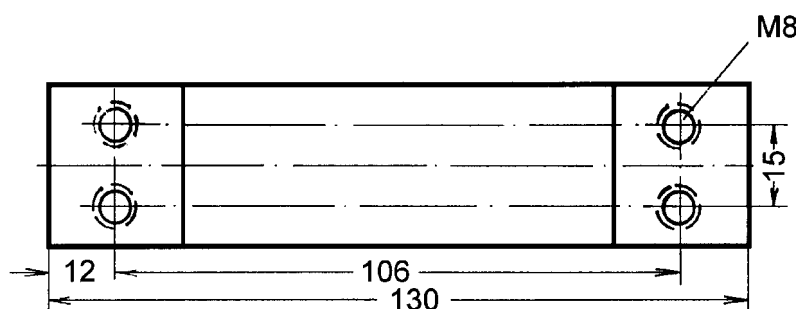
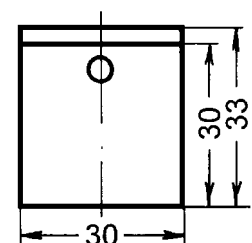
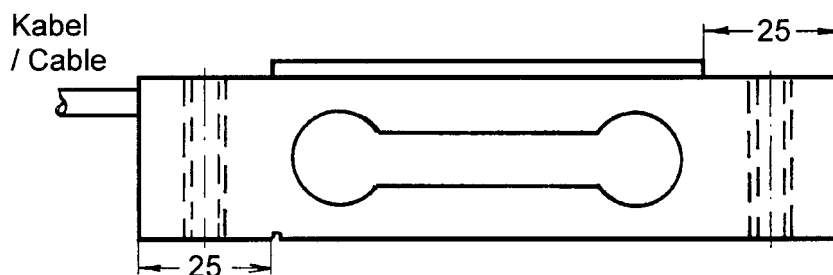
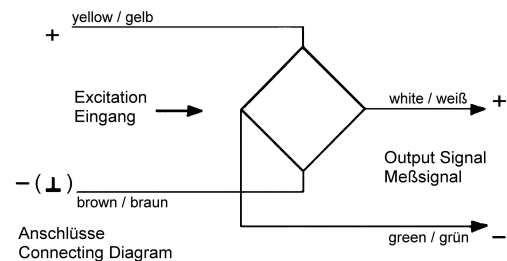
### Single Point

- Load Cell for off-center loading
- For Platform Sizes up to 30 x 30 cm
- Measuring Body made of Aluminium Alloy, with screened 4-wires Connecting Cable, 3.5m long
- Temperature Range -10 to +40°C
- Non-Linearity  $\pm 0.02\%$
- Zero Output Tolerance  $\pm 5\%$
- Nominal Output at Capacity 2 mV/V  $\pm 5\%$
- Excitation max. 12V
- Input Resistance approx. 380 $\Omega$
- Output Resistance approx. 350 $\Omega$
- Insulation Resistance >4G $\Omega$
- Safe Overload 150%
- Mechanical Failure 300%
- Environmental Protection IP65
- Simple Mounting



### Capacities:

**3, 5, 7, 10, 15, 20, 30, 50 kg**



All mounting holes with inner thread M8.

Alle Befestigungslöcher mit Innengewinde M8.