

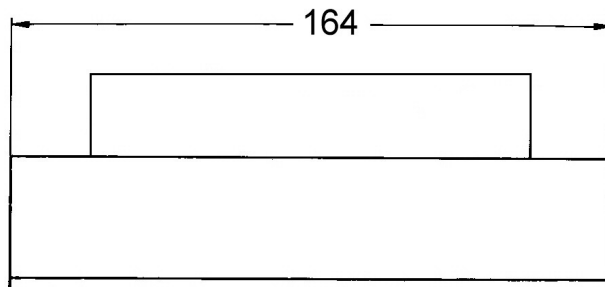
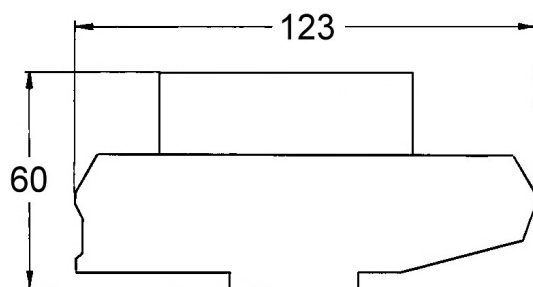


552-e

Weighing Module, Type PE 1367 H

Digital Weighing Amplifier

- Function: The unit is a precise and linear link between Load Cells and Digital Indicator, PC or PLC.
The weighing electronic unit supplies the load cells with voltage and amplifies the measurement signals, which will then be able to be processed further.
- Design: Normus Europe PCB, 160 x 100 mm, connections by screw connectors
- Mounted on a device for top-hat rail mount (according to DIN EN 50022)
- With input for Load Cells (full bridge), possibility to connect max. 6 Load Cells, each 350 Ω
- Input Resistance > 100 k Ω
- Including Power Supply Voltage for the Load Cells, stabilised, 5 V
- Easy Adjusting of Ground Tare and Amplification (Zero and Measuring Range), Input of further Parameters possible via Serial Interface RS 232 or RS 485.
- For Mains Power:
 - a) 110 – 240 V, 50 – 60 Hz
 - b) 24 V DC
- Standard Outputs: RS 232 or alternatively RS 485
- Optional Outputs:
 - 4 – 20 mA (current output)
 - Setpoints (min./max.) as Open-Collector (programmable via interface)
- Possible Inputs: External Taring or Initiation of Printout



All dimension in mm.