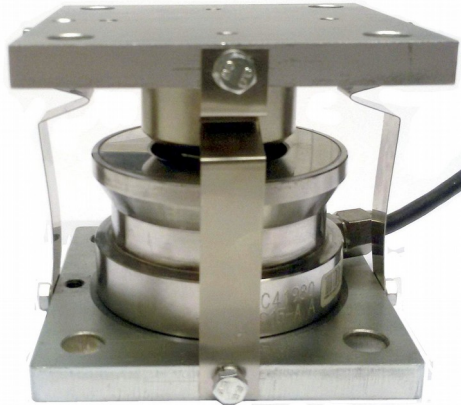


## SPRINGMOUNT® Weighing Module

## B-DJ-M8

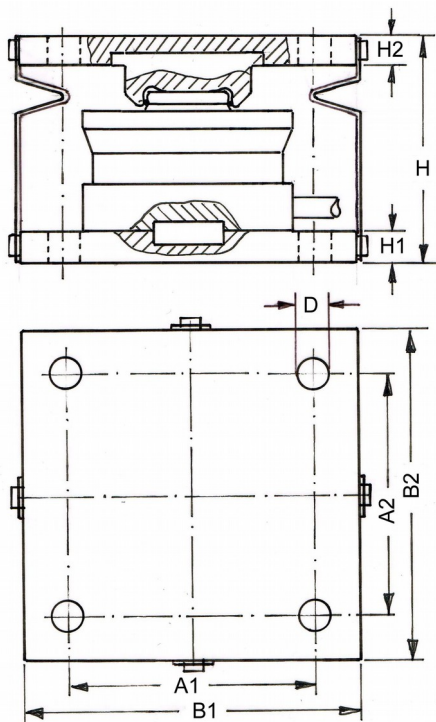
Capacities: 1, 2.2, 3.3, 4.7, 10, 15, 22, 33, 47, 68, 100, 150 t.



### Characteristics:

- Elastic restraining using leaf springs (*SPRINGMOUNT®*-Technology)
- Optimised force transmission from head plate to load cell
- Load cell made of stainless steel (17-4PH)
- Sensitivity 2.85 mV/V
- Accuracy class C3 (10-47t), 0.02% (others)
- Environmental protection IP 68

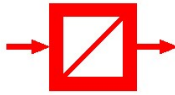
### Dimensions:



Capacity [t]	Dimensions [mm]				
	H	B1=B2	A1=A2	H1=H2	D
1/2.2/3.3/4.7	96	90	70	10	9.5
10 / 15 / 22	90	100	75	10	12
33	114	120	90	12	14
47	133	165	130	15	18
68	143	165	130	15	18
100	159	195	150	20	22
150	179	195	150	20	22

Dimensions in mm.

Cable Diameter max. 5 mm, Cable Length 8 m (1-4.7t) and 12 m (10-47t) and 16 m (68-150t), 4-wire.



**SPRINGMOUNT® Weighing Module**

**B-DJ-M8**

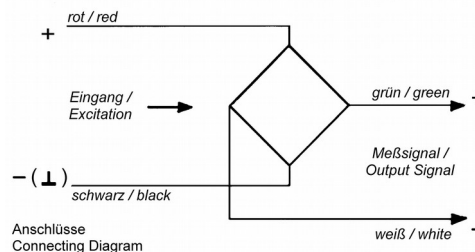
*Technical Specifications:*

Used Load Cell: B-DJ

Capacity	(E <sub>max</sub> )	[t]	1–4.7, 68–150, 10–47.
Accuracy Class			0.02% C3 (OIML R60)
Maximum Number of Load Cell Intervals	(n <sub>LC</sub> )		3000
Minimum Load Cell Verification Interval	(V <sub>min</sub> )	[% of E <sub>max</sub> ]	0.01
Sensitivity	(C <sub>n</sub> )	[mV/V]	2.85 ± 0.02
Non-Linearity	(d <sub>lin</sub> )	[% of C <sub>n</sub> ]	≤ 0.02 ≤ 0.018
Zero Balance		[% of C <sub>n</sub> ]	≤ 1
Temperature Effect on Zero Balance	(TC <sub>0</sub> )	[%C/10K]	≤ 0.02
Temperature Effect on Sensitivity	(TC <sub>C</sub> )	[%C/10K]	≤ 0.02
Minimum Dead Load		[% of E <sub>max</sub> ]	0
Safe Load Limit	(E <sub>lim</sub> )	[% of E <sub>max</sub> ]	150
Breaking Load	(E <sub>d</sub> )	[% of E <sub>max</sub> ]	300
Deflection at E <sub>max</sub>		[mm]	≤ 0.30
Creep (over 30 Minutes)		[% of C <sub>n</sub> ]	≤ 0.02 ≤ 0.017
Zero Return after 30 Minutes		[% of C <sub>n</sub> ]	≤ 0.02 ≤ 0.017
Excitation		[V]	5 ... 15
Input Resistance	(R <sub>LC</sub> )	[Ω]	1450 ± 50
Output Resistance	(R <sub>OUT</sub> )	[Ω]	1405 ± 5
Insulation Resistance		[MΩ]	> 5000 (at 50V DC)
Nominal Temperature Range		[°C]	-10 ... +40
Service Temperature Range		[°C]	-30 ... +70
Storage Temperature Range		[°C]	-40 ... +75
Material of Load Cell			Stainless Steel (17-4PH)
Material of Other Parts		either	Stainless Steel or Galvanised Steel
Protection Class to EN 60 529			IP68

*Cable/Connections:*

- 4-wire cable, 8 m (1-4.7t) and 12 m (10-47t) and 16 m (68-150t) long;
- Cable screened, screen not connected with load cell body;
- Cable diameter approx. 5 mm;
- End of wires stripped and tinned.



Excitation +	red
Excitation -	black
Signal +	green
Signal -	white

*Optional Accessories:*



Load Cell Junction Box, Model AK,  
Stainless Steel Housing IP65



Load Cell Connection Cable,  
4-wire or 6-wire, screened

More Weighing Technology (e .g. load cells, weight indicators, weighing amplifiers) on [www.gbuettner.de](http://www.gbuettner.de).