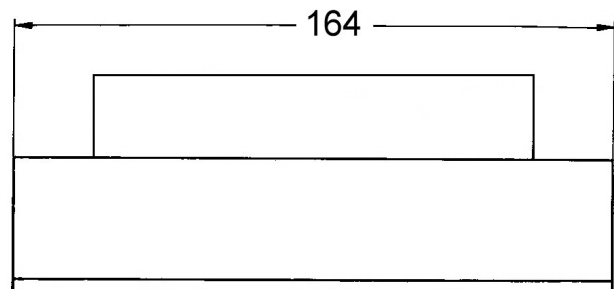
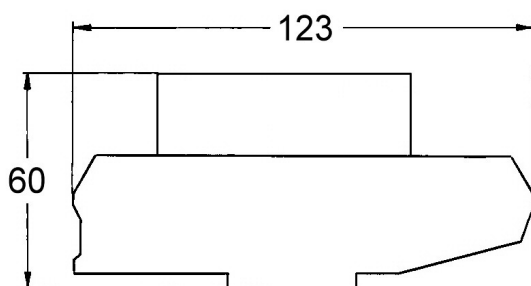
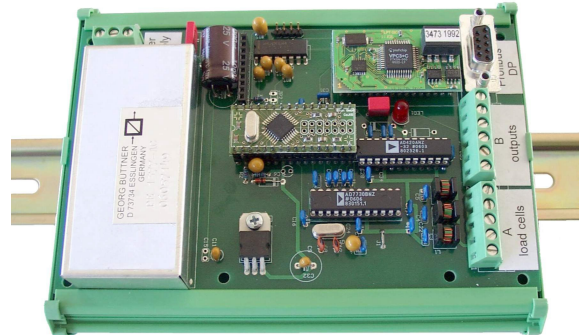




568-e

Weighing Module, Type PE 1377 H *Digital Weighing Amplifier*

- **Functions:** The unit is a precise and linear link between Load Cells and Processing Systems (Profibus, PC, PLC). The weighing electronic unit supplies the load cells with voltage and amplifies the measurement signals, which will then be able to be processed further.
- **Design:** Normus Europe PCB, 160 x 100 mm, mounted on a device for top-hat rail mount, connections by screw connectors;
Option: Available in Stainless Steel Housing
- With input for Load Cells (full bridge), possibility to connect max. 6 Load Cells of each 350 Ω
- Input Resistance > 100 k Ω
- Including Power Supply Voltage for the Load Cells, stabilised, 5 V
- Easy Adjusting of Ground Tare and Amplification (Zero and Measuring Range), Input of further Parameters possible via Interface.
- For Mains Power: 24 V DC 5W
- Standard Outputs:
 - Profibus DP
 - RS 232 or alternatively RS 485
- Optional Outputs:
 - Analog Output 4 – 20 mA (current output)
 - Setpoints (min./max.) as Open-Collector
- Optional Inputs: External Taring or Initiation of Printout
- Further Options: Weighing Module also available in Stainless Steel Housing (instead of top-hat rail mount)



All dimensions in mm.