

521-e

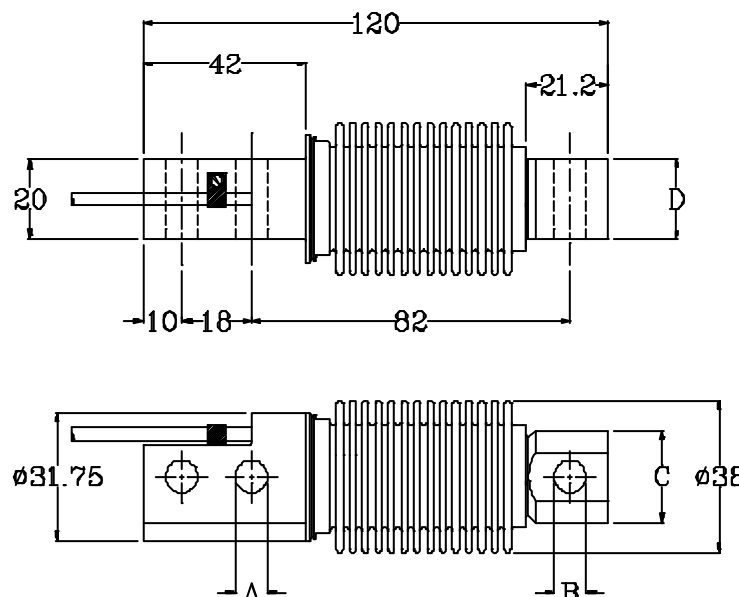
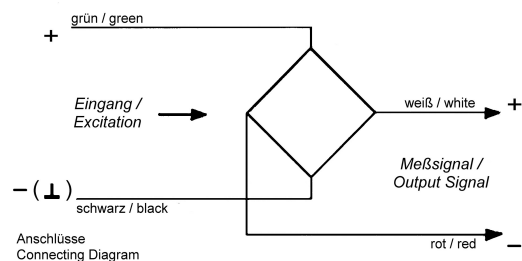
Load Cell, Type B 84-C3 (BM11) Weighing Sensor

- OIML R60, Accuracy Class C3
- For exact measurements of force and weight (tension and compression)
- Measuring Body made of Stainless Steel, with screened 4-wires Connecting Cable
- Temperature Range -10 to +65°C
- Non-Linearity $\pm 0.017\%$
- Zero Output Tolerance $\pm 1\%$
- Nominal Output at Capacity 2 mV/V $\pm 1\%$
- Excitation max. 12V
- Input Resistance approx. 460 Ω
- Output Resistance approx. 350 Ω
- Insulation Resistance > 5G Ω
- Safe Overload 150%
- Mechanical Failure 300%
- Environmental Protection IP68
- Simple Mounting



Capacities:

10, 20, 50, 100, 200, 350, 500 kg.



All Dimensions in mm

Type	Capacity [kg]	A [mm]	B [mm]	C [mm]	D [mm]	Cable [m]
B84-C3 (BM11)	10, 20, 50, 100, 200	8.2	8.2	23.0	20.0	3.0
	350, 500	10.3	10.3	24.0	19.0	3.0